



COPPER RESOURCE GROUP

THE RED METAL WITH THE GREEN FUTURE

WWW.COPPERRESOURCEGROUP.COM

Disclaimers



Information Contained In This Presentation

This presentation (the "Presentation") has been prepared by Lahontan Gold Corp. (the "Company" or "LGC") solely for informational purposes. None of the Company, its affiliates or any of their respective employees, directors, officers, contractors, advisors, members, successors, representatives or agents makes any representation or warranty as to the accuracy or completeness of any information contained in this Presentation and shall have no liability for any representations (expressed or implied) contained in, or for any omissions from, this Presentation. This Presentation shall not constitute an offer, nor a solicitation of an offer, of the sale or purchase of securities. This Presentation does not constitute an offering of securities of the Company and under no circumstances is it to be construed as a prospectus or advertisement or public offering of securities.

No securities regulatory authority or similar authority has reviewed or in any way passed comment upon the document or the merits of the Company's securities and any representation to the contrary is an offence. Except where otherwise indicated, the information contained in this Presentation has been prepared by the Company and is given as of the date hereof. The delivery of this Presentation shall not imply that the information herein is correct as of any date after the date hereof.

Market and Industry Data

This Presentation includes market and industry data that has been obtained from third party sources, including industry publications. The Company believes that the industry data is accurate and that the estimates and assumptions are reasonable, but there is no assurance as to the accuracy or completeness of this data. Third party sources generally state that the information contained therein has been obtained from sources believed to be reliable, but there is no assurance as to the accuracy or completeness of included information. Although the data is believed to be reliable, the Company has not independently verified any of the data from third party sources referred to in this Presentation or ascertained the underlying economic assumptions relied upon by such sources. References in this Presentation to reports and publications should not be construed as depicting the complete findings of the entire referenced report or publication. The Company does not make any representation as to the accuracy of such information.

Cautionary Note Regarding Forward-looking Information

This Presentation contains "forward-looking information" within the meaning of applicable Canadian securities laws. Forward-looking information includes, but is not limited to, information with respect to the Company's strategy, plans or future financial or operating performance, and advancements at the Company's properties; Any expectations with respect to defining mineral resources or mineral reserves on any of the project's any expectation with respect to any permitting, development or other work that may be required to bring any of the projects into production; any expectation that any of the projects can be brought back into production rapidly or expeditiously; any expectations as to future exploration potential of any of the projects; any expectation as to the outcome or success of any proposed programs for any of the projects; any expectation that market conditions will warrant future production from any of the projects. Generally, but not always, forward looking information and statements can be identified by the use of words such as "plans", "expects", "is expected", "budget", "scheduled", "estimates", "forecasts", "intends", "anticipates", or "believes" or the negative connotation thereof or variations of such words and phrases or statement that certain actions, events or results "may", "could", "would", "might" or "will be taken", "occur" or "be achieved" or the negative connotation thereof.

Forward-looking information is based on the Company's current expectations, beliefs, assumptions, estimates and forecasts about the Company's business and the industry and markets in which it operates. Such forward information and statements are based on numerous assumptions, including among others, the availability of financing, the accuracy of previous exploration records and results, that the results of planned exploration activities are as anticipated, the cost of planned exploration activities, that third party contractors, equipment and supplies and governmental and other approvals required to conduct the Company's planned exploration and development activities will be available on reasonable terms and in a timely manner and that general business and economic conditions will not change in a material adverse manner. Although the assumptions made by the Company in providing forward looking information or making forward-looking statements are considered reasonable by management at the time, there can be no assurance that such assumptions will prove to be accurate.

Forward-looking information and statements also involve known and unknown risks and uncertainties and other factors, which may cause actual results, performances and achievements of the Company to differ materially from any projections of results, performances and achievements of the Company expressed or implied by such forward-looking information or statements. These factors include receipt of certain regulatory approvals in connection with the completion of the Transaction; the satisfaction of closing conditions; potential conflicts of interest between the Company and Energy Fuels; the costs associated with bringing any of the projects back into production; risks that historical mineral estimates can be updated and be verified to be current mineral resources or mineral reserves; permitting and regulatory delays; litigation risks; competition from others; market factors, including future demand for and prices realized from the sale of uranium and vanadium; government actions that could restrict or eliminate the ability to mine on public lands, such as through the creation or expansion of national monuments or through mineral withdrawals; the policies and actions of foreign governments, which could impact the competitive supply of and global markets for metals; the Company's expectations in connection with the production and exploration, development and expansion plans at the projects discussed herein being met; changes in national and local government legislation, taxation, controls or regulations and/or changes in the administration or laws, policies and practices; the impact of general business and economic conditions; fluctuating metal prices; currency exchange rates; the impact of inflation; general risks of the mining industry; failure of plant, equipment or processes to operate as anticipated; unanticipated results of future studies; seasonality and unanticipated weather changes; success of exploration activities, permitting timelines, government regulation; environmental risks; unanticipated reclamation expenses; and/or title disputes or claims.

Although the Company has attempted to identify important factors that could cause actual actions, events or results to differ materially from those contained in the forward-looking information or implied by forward-looking information, there may be other factors that cause results not to be as anticipated, estimated or intended. There can be no assurance that forward-looking information and statements will prove to be accurate, as actual results and future events could differ materially from those anticipated, estimated or intended. Accordingly, readers should not place undue reliance on forward-looking statements or information. The Company undertakes no obligation to update or reissue forward-looking information as a result of new information or events except as required by applicable securities laws.

The footnotes, endnotes and appendices to this Presentation contain important information.

The technical information in this presentation has been reviewed by Quentin Browne M.S.c., who is a Qualified Person as the term is defined in National Instrument 43-101 – Standards of Disclosure for Mineral Projects.

CRG INVESTMENT HIGHLIGHTS

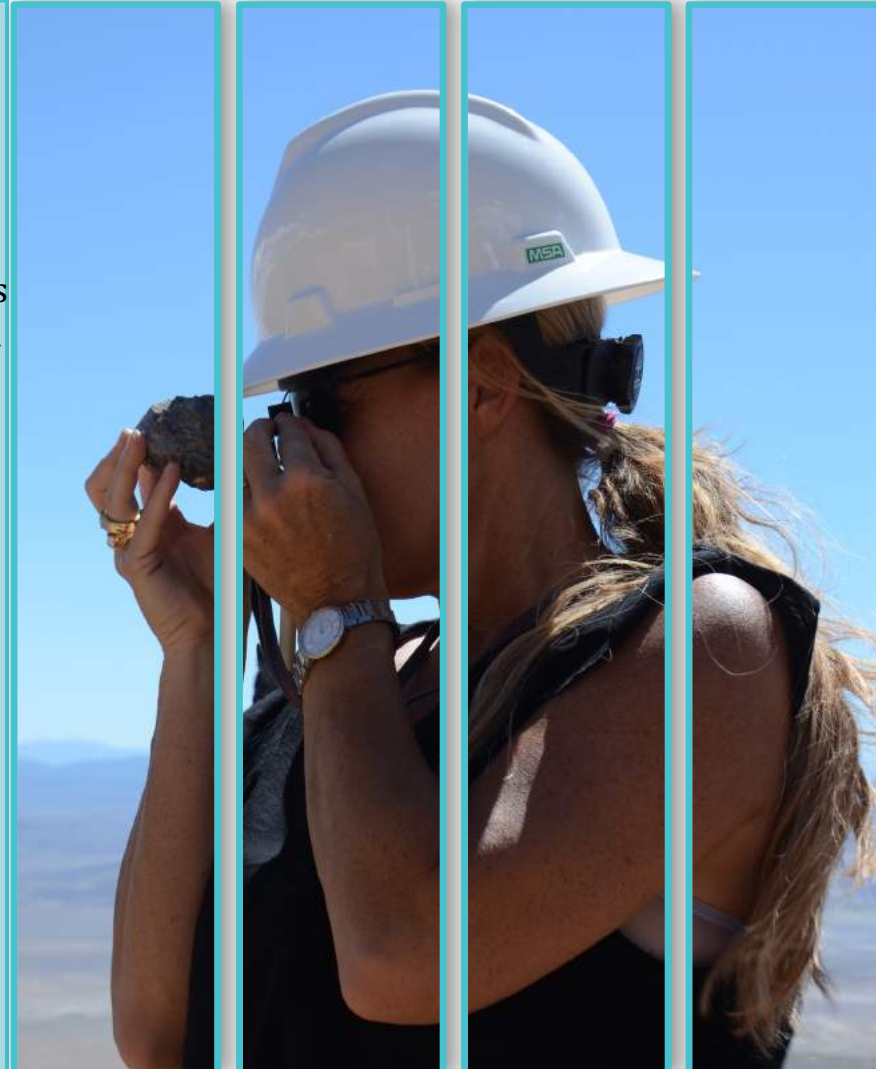


- High quality Cu-Au-Ag assets in three top tier mining jurisdiction Arizona, Nevada & Peru.
- Management team lead by Kimberly Ann & Brian Maher (Lahontan Gold Corp, C3 Metals, LARG, Prodigy Gold) who have a proven track record in building value through asset management, mergers and acquisitions, bringing rapid value growth for shareholders.
- Stable, supportive mining jurisdiction in World Class Mineral Belt, with low cost **mining giants** as our neighbors: Freeport (Bagdad mine), Asarco (Ray Mine), & KGHM (Carlota Mine).
- Copper-gold resources are open at depth and un-constrained by drilling or geology.
- Historic drilling indicates +500M ton Cu-Mo out-cropping system at our flagship Squaw Peak asset.
- Accessible year round by paved and high-quality dirt roads.
- Management has “skin in the game.”

TECHNICAL HIGHLIGHTS

SQUAW PEAK PROJECT, AZ

- Advanced exploration property hosting a porphyry Cu-Mo-Ag deposit.
- Past underground production from the 1940's show average grades of 0.82% Cu, 0.53% Mo.
- Potential to host +500M tonnes grading >0.40% Cu eq.
- Deposit begins at surface and its extent at depth is unconstrained by drilling.
- Many drill holes bottom in good grade copper mineralization emphasizing the ability to rapidly expand resources with additional drilling.
- Alteration zoning suggest the shallow mineralization seen in drill holes and on the surface may overly a much larger, deeper, copper deposit.



DOLLY VARDEN PROJECT, NV

- Grades in outcrop and nearby historic drill holes infer a target of +100M tonnes with potential grades of 1-2% Cu, and +1-2 gpt Au with significant base metals and Ag credits.
- Adjacent Victoria Mine produced 800,000 tonnes grading 2.0% Cu, 10 gpt Ag with significant Au and Bi credits.

ANTASONCCO PROJECT, PERU

- High-grade skarn system in the prolific Andahuaylas Copper - Gold Belt, never been drilled.
- Previous rock chip samples produced up to 8.0% Cu, 1.1 gpt Au, and 105 gpt Ag. Potential for 250 to >500 Mt system at high grades.

CORPORATE Achievements 2021-2022

June 2021

- Copper Resource Group was formed by combining two high quality Cu, Mo, Ag projects: Dolly Varden NV, Squaw Peak AZ.

August 2021

- Completed Seed round financing of \$600,000. Proceeds focused on staking 200 new claims, more than doubling our footprint at both Squaw Peak and Dolly Varden.

Sept 2021

- Completed a detailed mapping and soil sample program at Dolly Varden allowing our team to design a focused drill program for submittal November 2022.

April 2022

- Completed initial surface mapping and sampling program at Squaw Peak, part of the planning process for drone mag and IP surveys.



Squaw Peak DDH SP0805, 8.4m depth,
1.11% Cu, 178 ppm Mo

FOUNDERS



KIMBERLY ANN

Mining executive and founder of multiple Junior Mining companies, serving as CEO, President, CFO and Board Member.

In the last twelve years she has raised over \$210M in project financing and collaborated on three Junior Mining M&A projects including the \$340M buyout of Prodigy by Argonaut Gold.

Successfully brought a high-grade gold-silver underground mine into production in Northern Peru (PPX Mining).

Founded Latin America Resource Group (“LARG”), building Jasperoide from two small concessions into a 57 sq km strategic project. In 2020, LARG merged with Carube Copper Corp. to create C3 Metals Inc., subsequent value creation has yielded four-fold returns for LARG investors.

Managing Partner of KA Gold LLC which holds multiple advanced gold-silver exploration projects in Nevada. Kimberly attended the University of Washington, majoring in Business and Marketing.



BRIAN MAHER

Mining executive and economic geologist, President and CEO of PPX Mining, operating a high-grade underground gold and silver mine in northern Peru. Serves as Exploration Director for Lahontan.

Prior to PPX, Brian was President, CEO and Director of Prodigy Gold Inc, raising \$140M in project financing culminating in the \$341M acquisition of Prodigy by Argonaut Gold in 2012.

Project Manager for Metallic Ventures Gold Inc., supervising exploration, mine development, and operations at an underground gold mine in Nevada.

Exploration Manager for the US, Canada and Mexico for Hochschild Mining PLC. Managing Partner of KA Gold LLC, which holds multiple advanced gold-silver exploration projects in Nevada. BA degree (Geology) from the California State University, Chico and a MSc. degree (Economic Geology) from Colorado State University.

THE TEAM



SHAN SHAHIDI
Chief Financial Officer

- Chartered Professional Accountant with over ten years of public accounting experience in audit, review and tax engagements in a variety of industries.
- Mr. Shahidi holds a Bachelor of Mathematics from the University of Waterloo.



TONY GESUALDO
Exploration Manager

- Exploration geologist with a diverse background in mining and exploration from underground production geology and open pit expansion projects to early-stage exploration.
- Managed property-scale mapping projects and drill programs throughout Nevada for KA Gold, OceanaGold, and Coeur Rochester
- B.S. degree from the University of Georgia and an M.Sc. in Geology & Geology Engineering at the South Dakota School of Mines & Technology.



CHRIS IRWIN
Corporate Secretary & Attorney

- Chartered Professional Accountant with over 30 years of experience in public company reporting, financial management, accounting and audit.
- Currently CFO of Gold79 Mines Ltd., C3 Metals Inc. ,and Northern Graphite Corp.
- PricewaterhouseCoopers LLP where his primary focus was providing audit and regulatory reporting advisory services to Canadian and US publicly listed clients.
- Honours B.Comm. degree from McMaster University and is a Chartered Professional Accountant (Ontario).



CODY STOCK
Exploration Geologist

- Field geologist for Coeur Mining at the Wharf Mine in Lead, South Dakota.
- Mine geologist with McEwen Mining at the Gold Bar property in the Roberts Mountains of Eureka County Nevada.
- Cody Joined the Lahontan Gold Corp. exploration team in January of 2021 as an exploration geologist where he has assisted with the Santa Fe and Moho projects.



TIFFANY SEMON
General Manager

- Extensive experience in Management and General Logistics.
- Contributing to the needs of the company, she brings experience in the Junior Mining space with- General Office management responsibilities: Personnel Management, Budgeting, Bookkeeping, Business setup, Permitting, Payroll etc. She also comes to the industry with familiarity in BLM and related institutions processes and procedures, Field Exploration Operations expectations and needs, and expertise in Environmental Monitoring procedural, reporting and sampling requirements. She looks forward to holding a key role in the structure and success of the company.

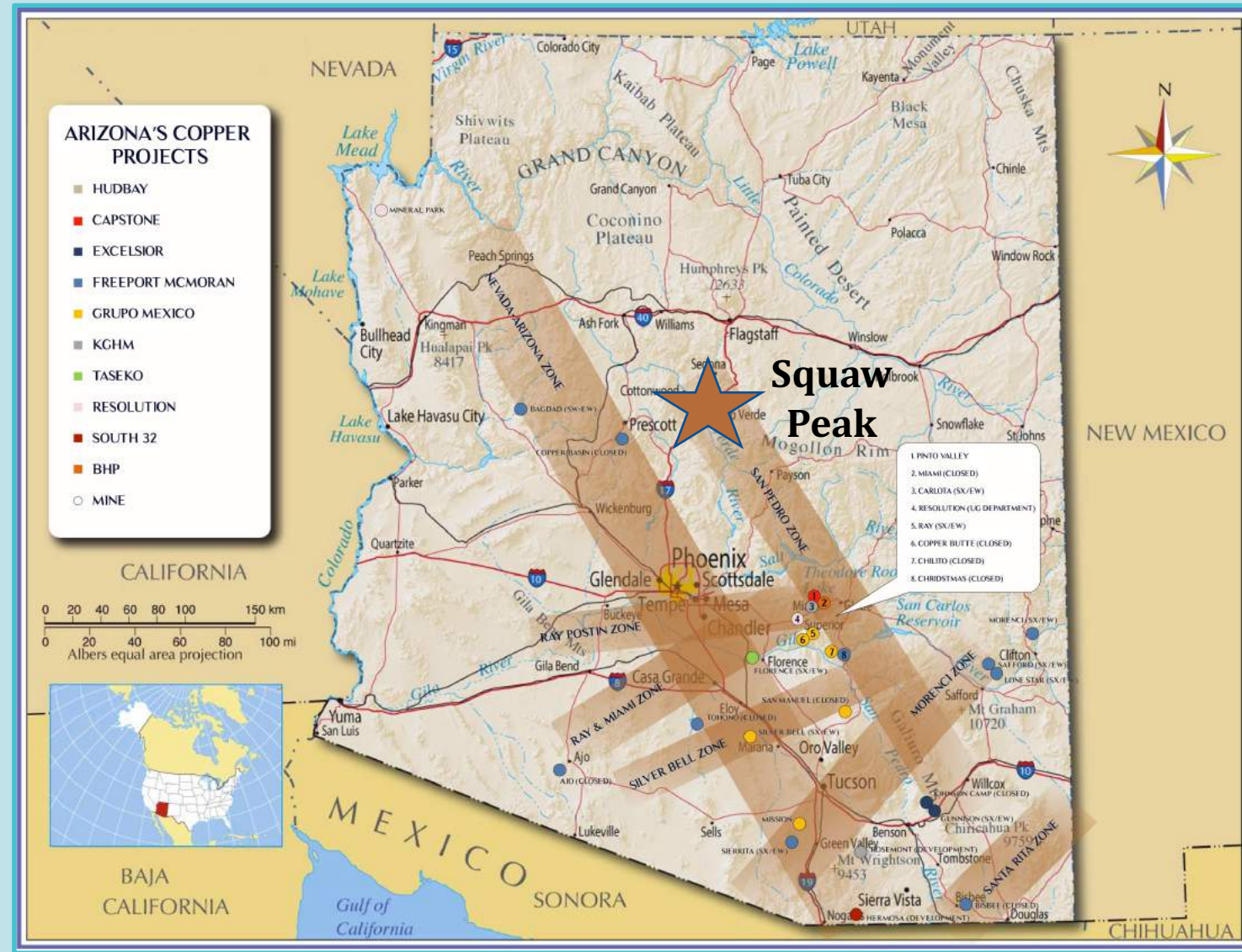


SHAWN BERGÉR
Corporate Communications

- Mr. Shawn Bergér is a Corporate Communications specialist, having led multiple corporate branding projects in the Junior Mining space and other e-commerce businesses.
- Expertise in investor outreach, website design, one-on-one interaction, with a boots-on-the-ground approach, has led to multiple successful value generative marketing campaigns in our industry.

SQUAW PEAK Location

- Twelve square kilometer land package within one of Arizona’s major copper belts with year-round access.
- Large geologic database: Over 30 reverse-circulation and core drill holes, underground workings, surface sampling and geophysics.
- Deposit begins on the surface and its extent at depth is unconstrained by drilling.
- Given the volume of potential mineralization, its location in a Tier One copper province, Squaw Peak represents an outstanding growth opportunity for Copper Resource Group.



SQUAW PEAK OVERVIEW

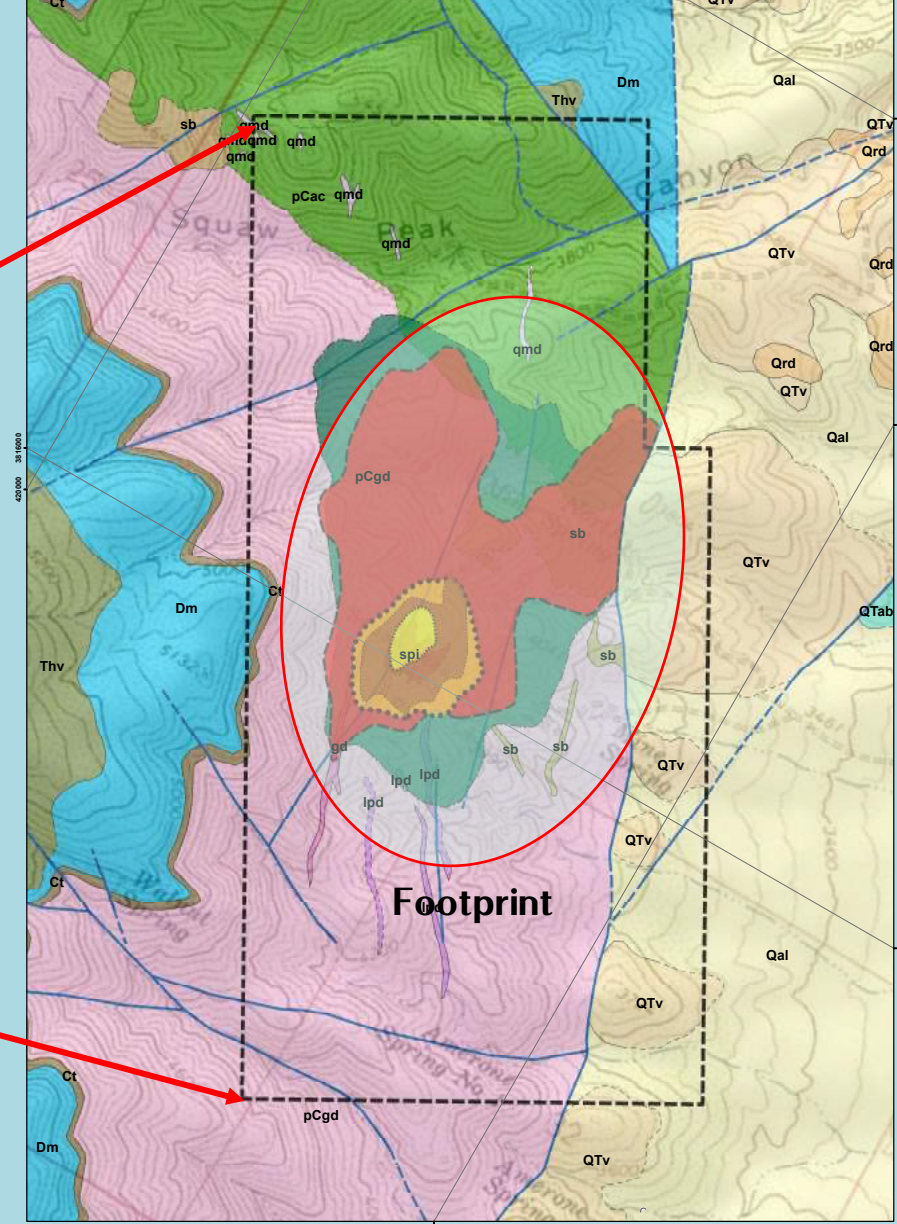
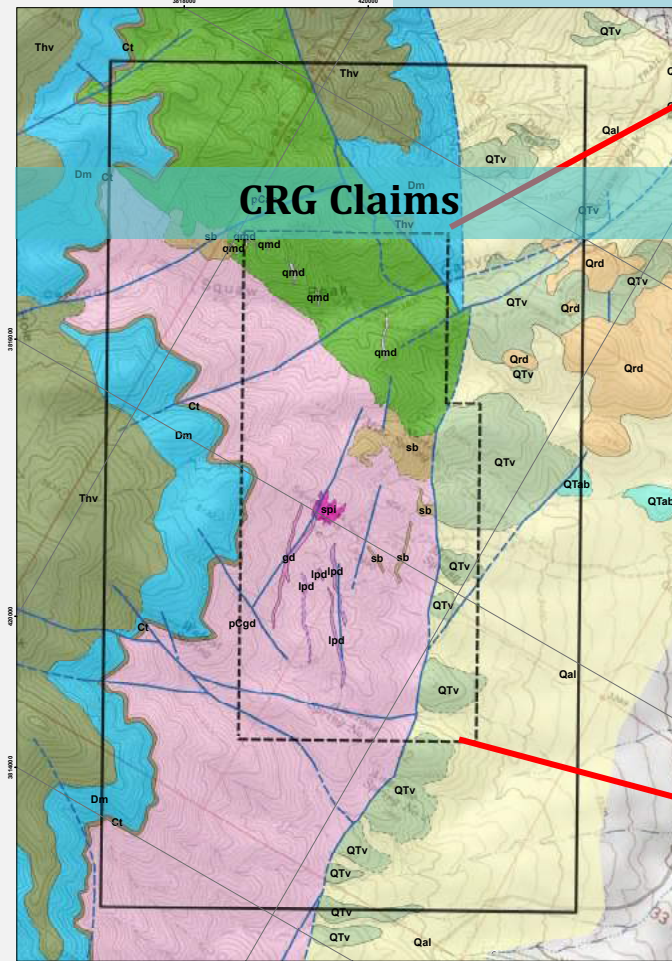
YAVAPAI COUNTY, ARIZONA

- Advanced exploration property hosting a porphyry copper-molybdenum-silver deposit. Recently staked claims expand land package to 1,172 ha (11.7 sq km).
- Based on grades seen in surface outcrop, underground workings and in drill holes, the project has the potential to host > 500 Mt grading >0.40% Cu eq in a shallow, outcropping deposit.
- Alteration zoning, geophysics and geochemistry suggest the shallow Cu deposit overlies a deeper “Resolution”-like copper porphyry system.

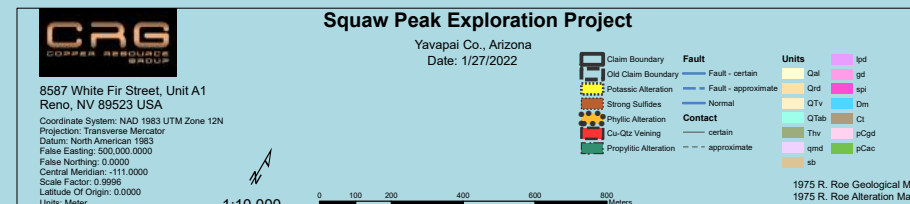


SQUAW PEAK GEOLOGIC SETTING

- Regional Setting: The Squaw Peak porphyry Cu–Mo–Ag system is hosted by pre-Cambrian granodiorite that has been intruded by Laramide age quartz monzonite stocks, dikes and breccia pipes.
- The surface footprint of the porphyry system measures approximately 900 by 1400 meters and is down-dropped to the East where mineralization may continue under cover.
- Geology, limited shallow drilling, historic underground mine workings and geophysics all support the model of a very large porphyry system at grades >0.4 % Cu and significant Mo and Ag.
- Concentric zoned patterns of alteration ranging from an inner potassic zone, a quartz–sericite–pyrite (phyllic) zone and an outer propylitic zone around a quartz monzonite porphyry stock emplaced along a major structural zone.

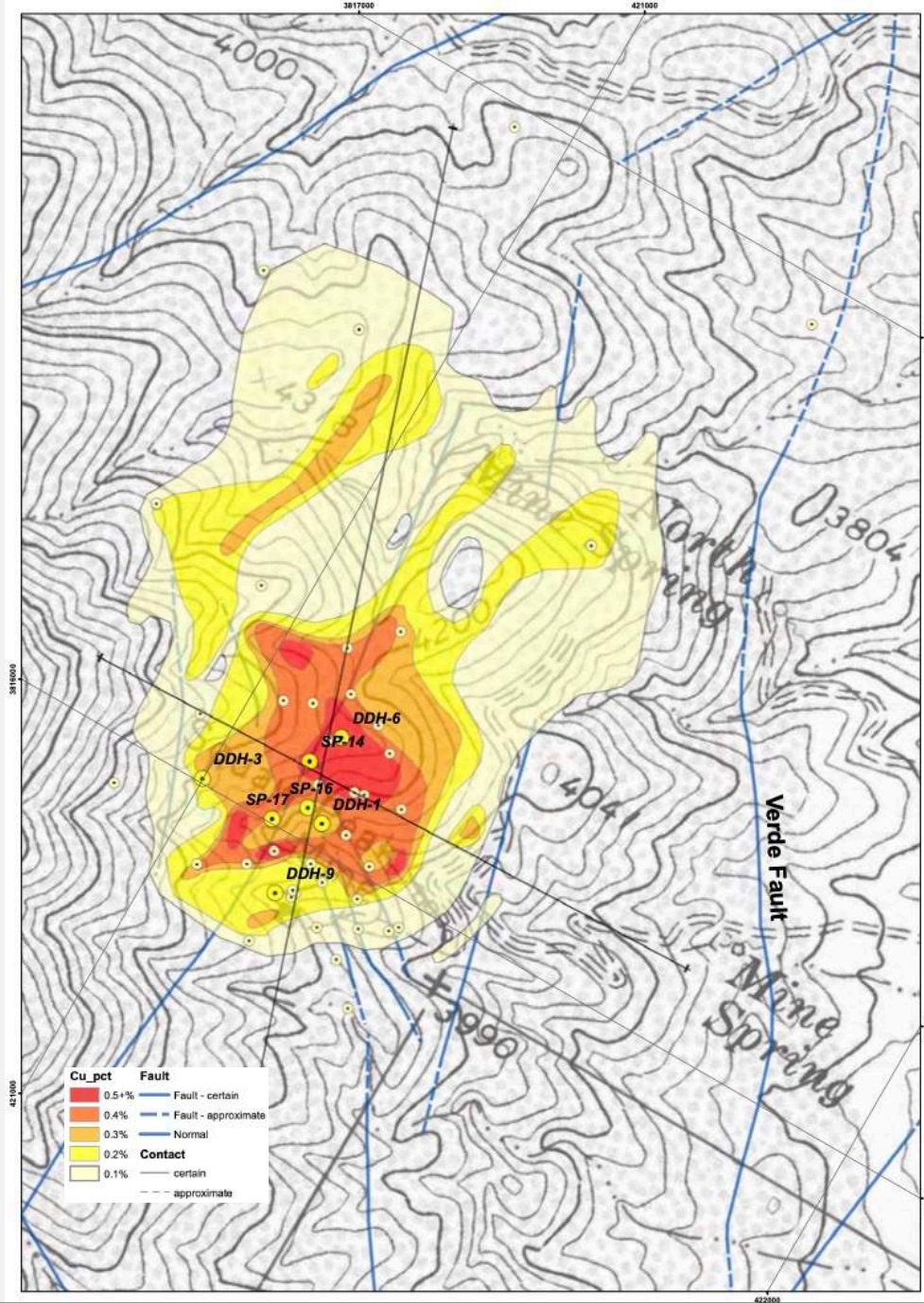


~ 12 sq km land package



SQUAW PEAK GEOLOGY

- Cu and Mo sulfides dominate the primary economic mineral suite.
- Sulfides typically have a homogeneous distribution as disseminations or stockwork/crackle fractures/veinlets, mostly in a Precambrian granodiorite that has been intruded by a Laramide age quartz monzonite intrusion.
- Mineralization has gradational distribution, especially to the north and west. Surface geochemistry and geologic mapping reinforce interpreted extensions of outcropping mineralization.
- Local shattered or brecciated zones host Cu-Mo-Ag mineralization with a direct relationship between degree of fracturing and the intensity of sulfide.



SQUAW PEAK DRILLING HIGHLIGHTS

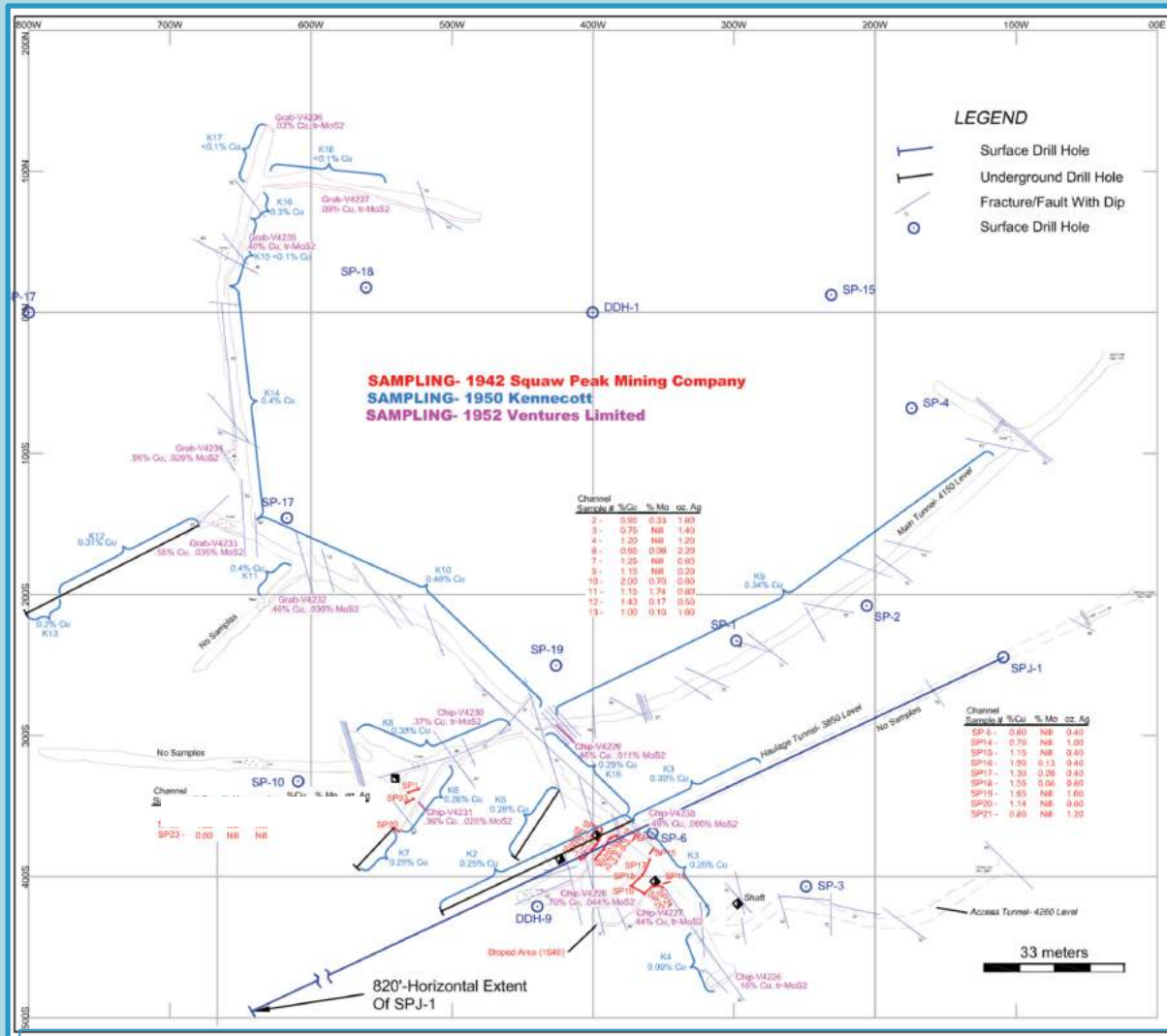
Squaw Peak Drilling Highlights

Drill Hole	From (m)	To (m)	Interval (m)	% Cu	% Mo	Notes
SP14	0.0	51.8	51.8	0.55%	-	Bottoms in mineralization
SP16	0.0	99.1	99.1	0.41%	-	Bottoms in mineralization
SP17	0.0	100.6	100.6	0.46%	-	Bottoms in mineralization
SP18	0.0	56.4	56.4	0.53%	-	Bottoms in mineralization, 1.32% Cu
DDH1	1.5	172.2	170.7	0.32%	0.021%	0.37% Cu Eq
DDH3	12.2	176.8	164.6	0.32%	0.008%	0.34% Cu Eq
DDH6	0.0	141.7	141.7	0.34%	0.012%	0.37% Cu Eq
DDH9	15.2	251.5	236.3	0.39%	0.011%	0.42% Cu Eq, Bottoms in mineralization



Squaw Peak DDH SP0805, 8.0m depth, 2.1% Cu, 0.21% Mo

SQUAW PEAK PREVIOUS EXPLORATION

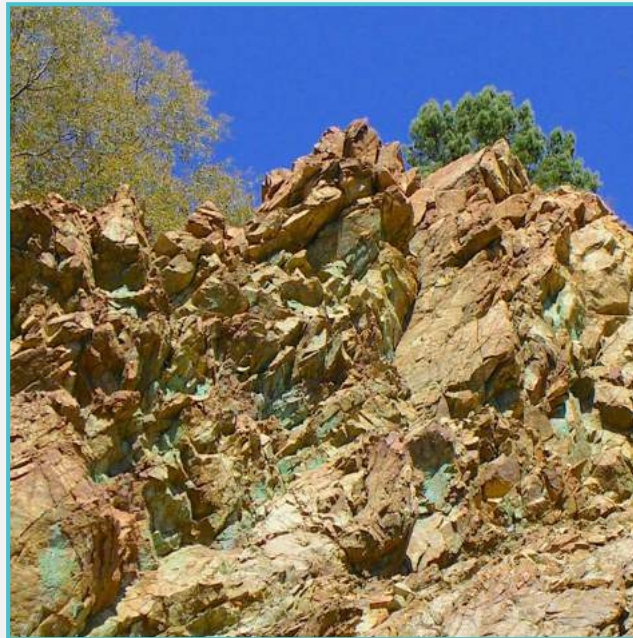


Underground channel samples have up to 2.0% Cu, 1.74% Mo, and 68 gpt Ag.

- Copper-moly mineralization crops out over a large area at Squaw Peak and has been traced in drill holes to approximately 300 meters below the surface.
- Copper grade distribution is very regular in primary mineralization with some copper enrichment near the surface. Many drill holes bottom in good grade copper mineralization emphasizing the ability to rapidly expand resources with additional drilling.
- Various non-compliant resource estimates have been made for Squaw Peak, the most recent reported approximately 200 Mt of 0.30% Cu Eq.
- Historic underground sampling and drilling at the Squaw Peak Project demonstrate excellent continuity of copper, silver, and molybdenum mineralization and structural controls to higher grade portions of the system.

SQUAW PEAK PLANNED EXPLORATION

- Compilation of existing surface and underground mapping is the first phase of exploration at Squaw Peak.
- Additional ground mapping of alteration assemblages and geophysics.
- An initial 5000-meter reverse-circulation drill program is contemplated for Squaw Peak, targeting extensions to known copper-molybdenum resources.



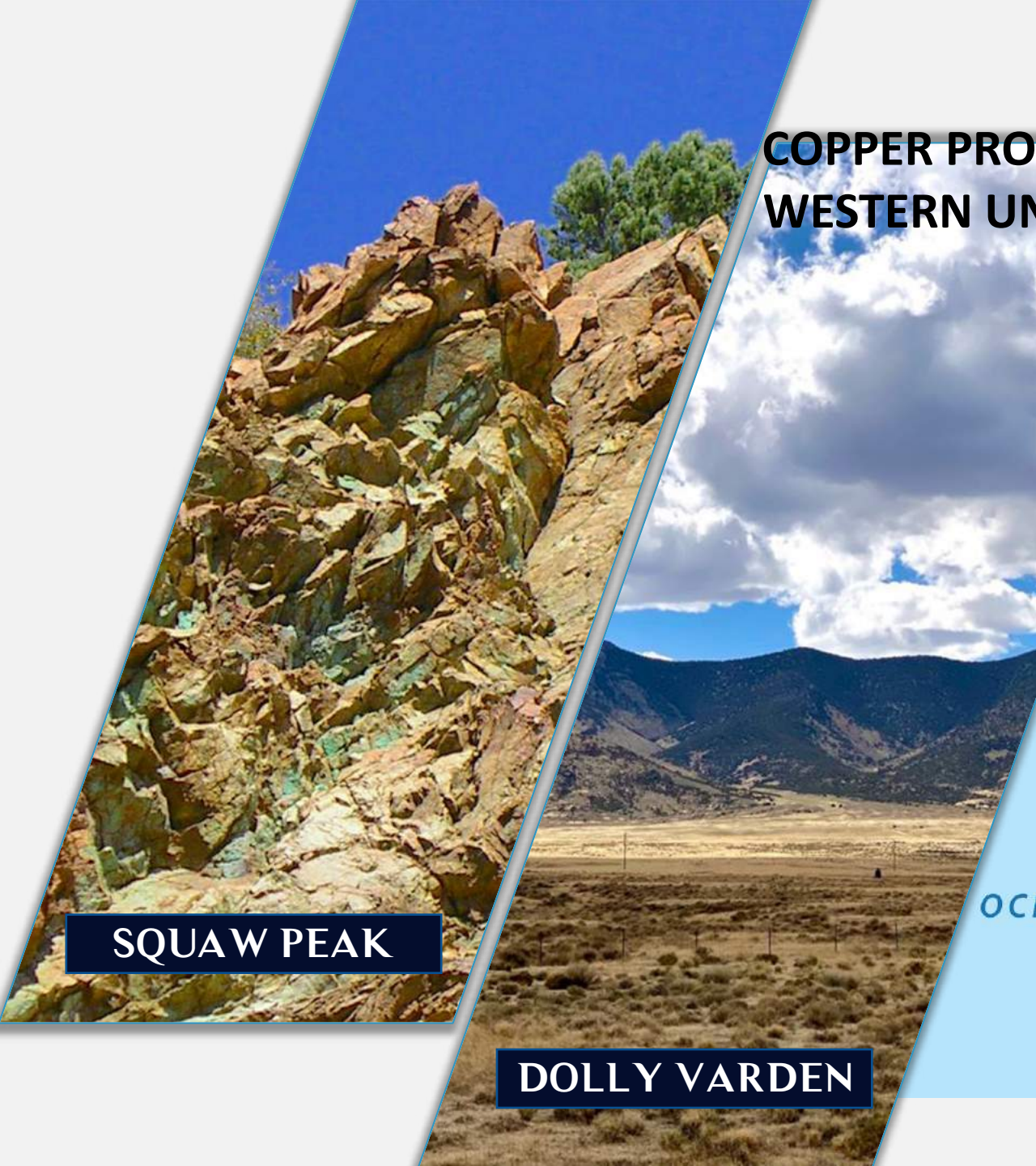
DOLLY VARDEN OVERVIEW

ELKO COUNTY, NEVADA

- The Dolly Varden Project explores a copper-gold skarn system with significant associated silver, lead, and zinc mineralization.
- Grades seen in outcrop and nearby historic drill holes infer a target of +50M tonnes with potential grades of 1-2% Cu, +1-2 gpt Au with significant base metal and Ag credits.
- The Project covers approximately 1,359 hectares (13.6 sq km) along the east slope of the Dolly Varden Mountains adjacent to the past producing Victoria Mine.
- Anaconda Minerals produced 800,000 tonnes of high-grade copper ore from 1973 until 1977 grading 2.0% Cu, 10 gpt Ag with significant Au and Bi credits at Victoria.
- 90's surface sampling identified the high-grade skarn on the Dolly Varden unpatented claims. While no drilling has been completed within the project area, there are scattered drill holes just west of the project area that intercepted tens of meters of up to 1% Cu.



COPPER PROJECTS IN THE WESTERN UNITED STATES



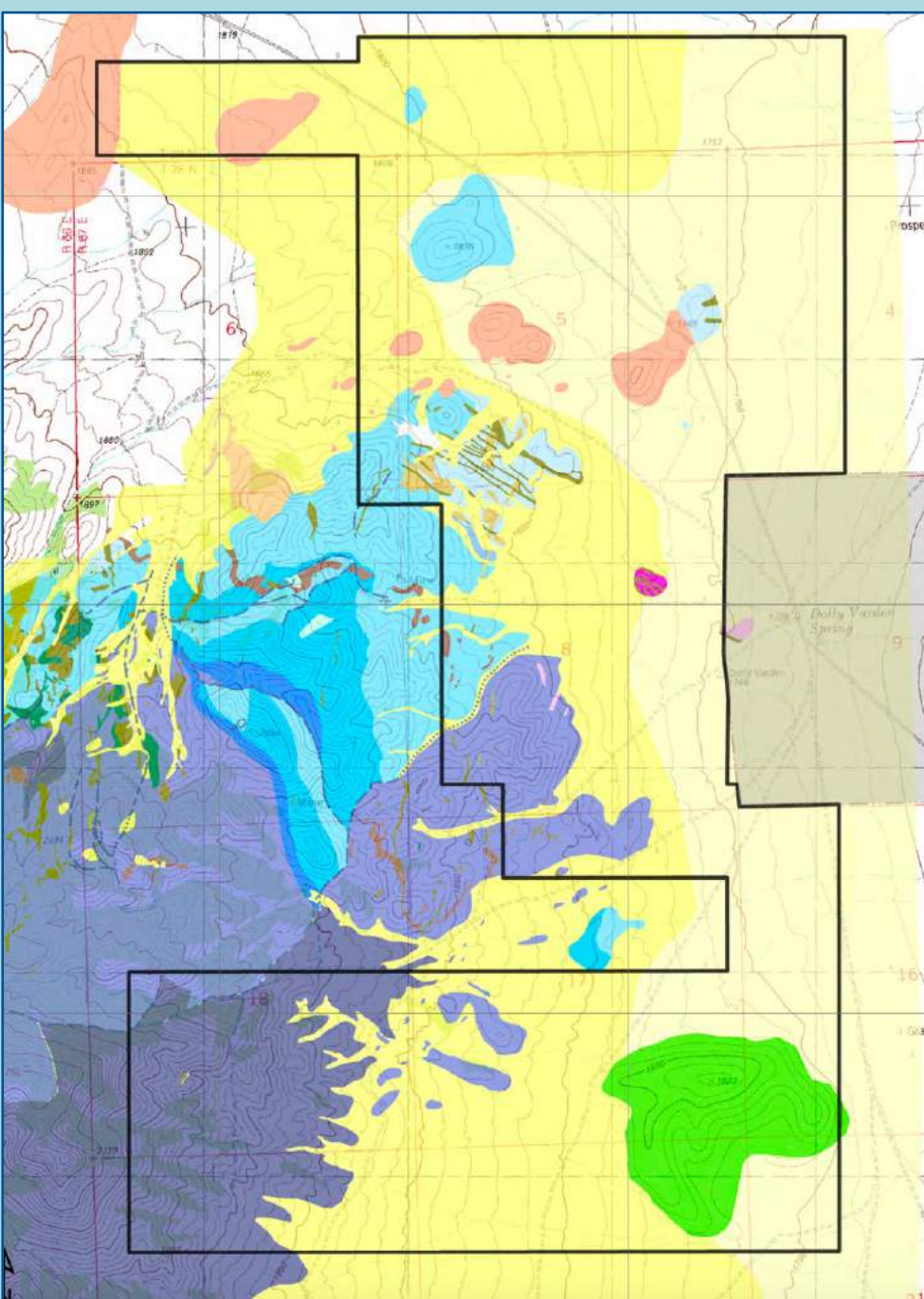
SQUAW PEAK

DOLLY VARDEN



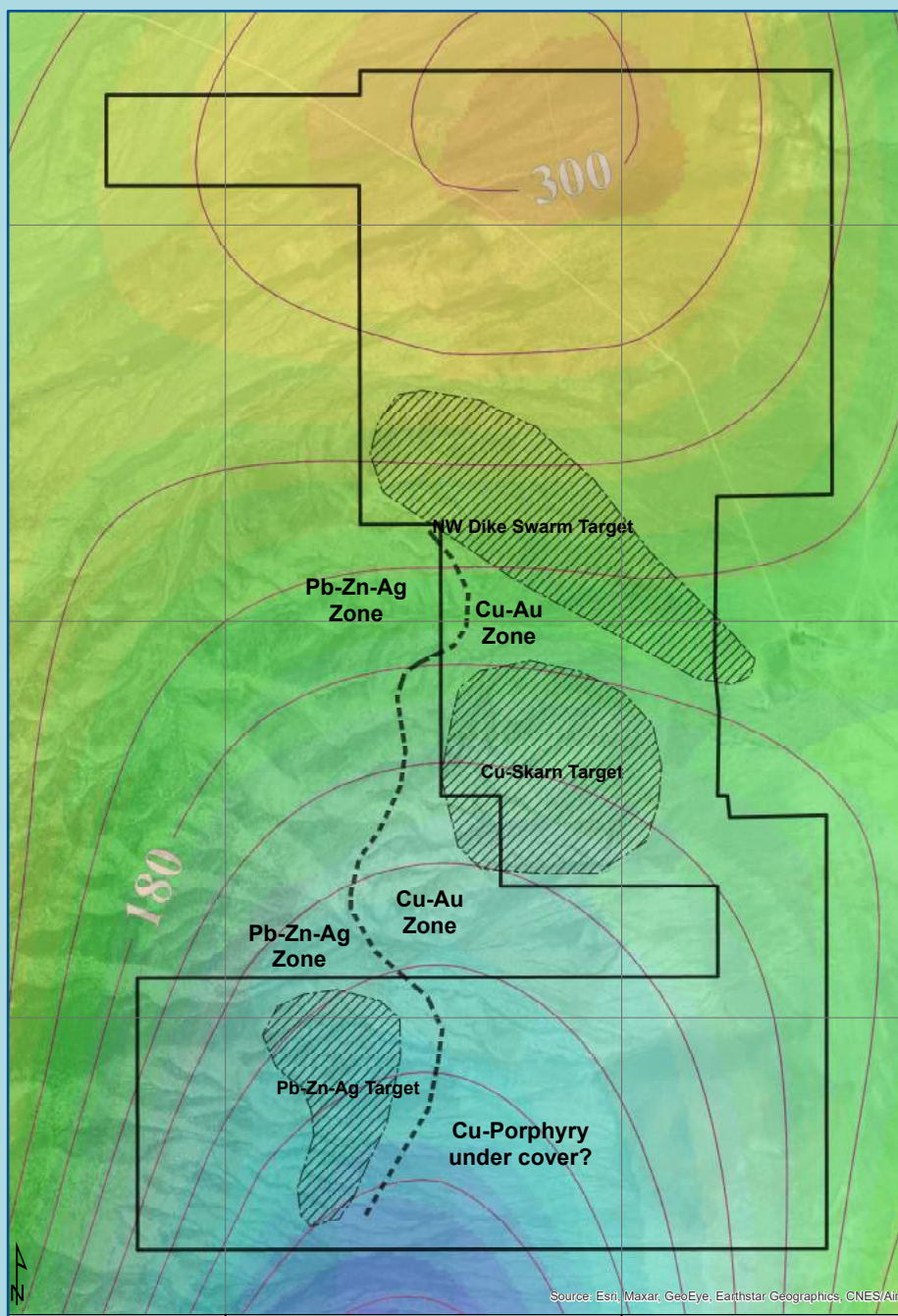
DOLLY VARDEN GEOLOGY

- The Dolly Varden project area is underlain Permian–Triassic age clastic and carbonate sedimentary rocks. The sedimentary sequence is intruded by Cretaceous quartz monzonite.
- Younger, possibly early Tertiary, porphyritic dikes cut all of the above rock units and are thought to be related to the Cu–Au–Ag base metal mineralization.
- A variety of skarn assemblages and jasperoid are the prime host lithologies.
- Geophysical surveys, possibly including drone magnetics and IP, should aid in identifying drill targets within the skarn system.



DOLLY VARDEN TARGETS

- Rock-chip sampling by the underlying claim holder produced up to 3.5% Cu and 4.2 gpt Au.
- Sampling by Copper Resource Group verified historic Au and Cu values but importantly identified significant accompanying Ag, Pb, and Zn: up to 281 gpt Ag, 6.1% Pb, and 13.6% Zn.
- Mineralization is hosted by skarn and crops out over a 3000 meter strike length. Polymetallic skarn is widespread and virtually untested by drilling.
- “Scout” style IP surveys combined with regional magnetics highlight the utility of geophysics in outlining the large scale of the Dolly Varden skarn system.



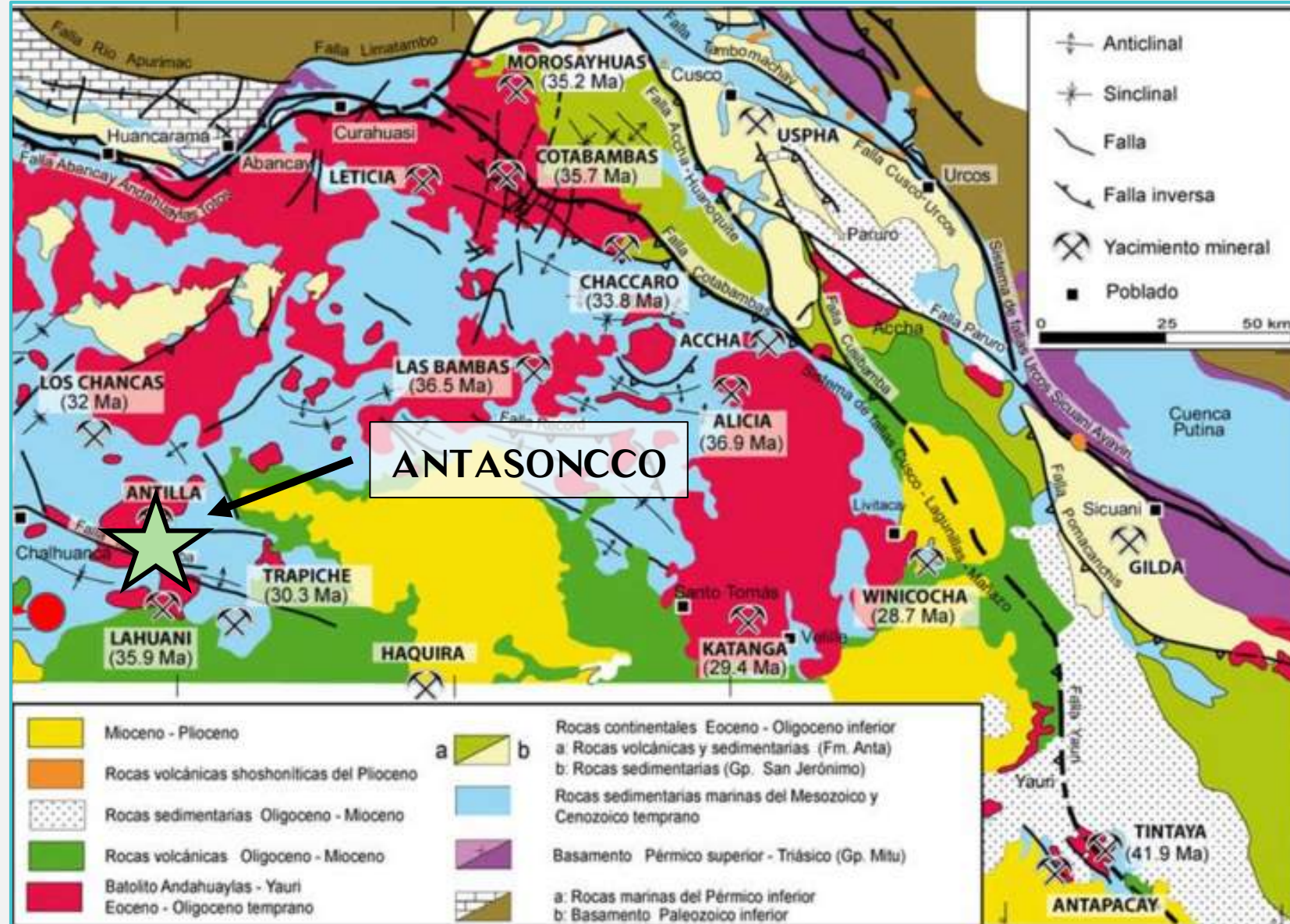
DOLLY VARDEN PLANNED EXPLORATION

- Detailed mapping and sampling are underway to better understand the skarn system and refine targets for drilling. Integrating new mapping with historic mapping and sampling will set the stage for geophysical surveys.
- Drone magnetics and ground IP are also planned prior to drilling.
- An initial 5000 metres reverse-circulation drill program Q3 2022 for Dolly Varden.

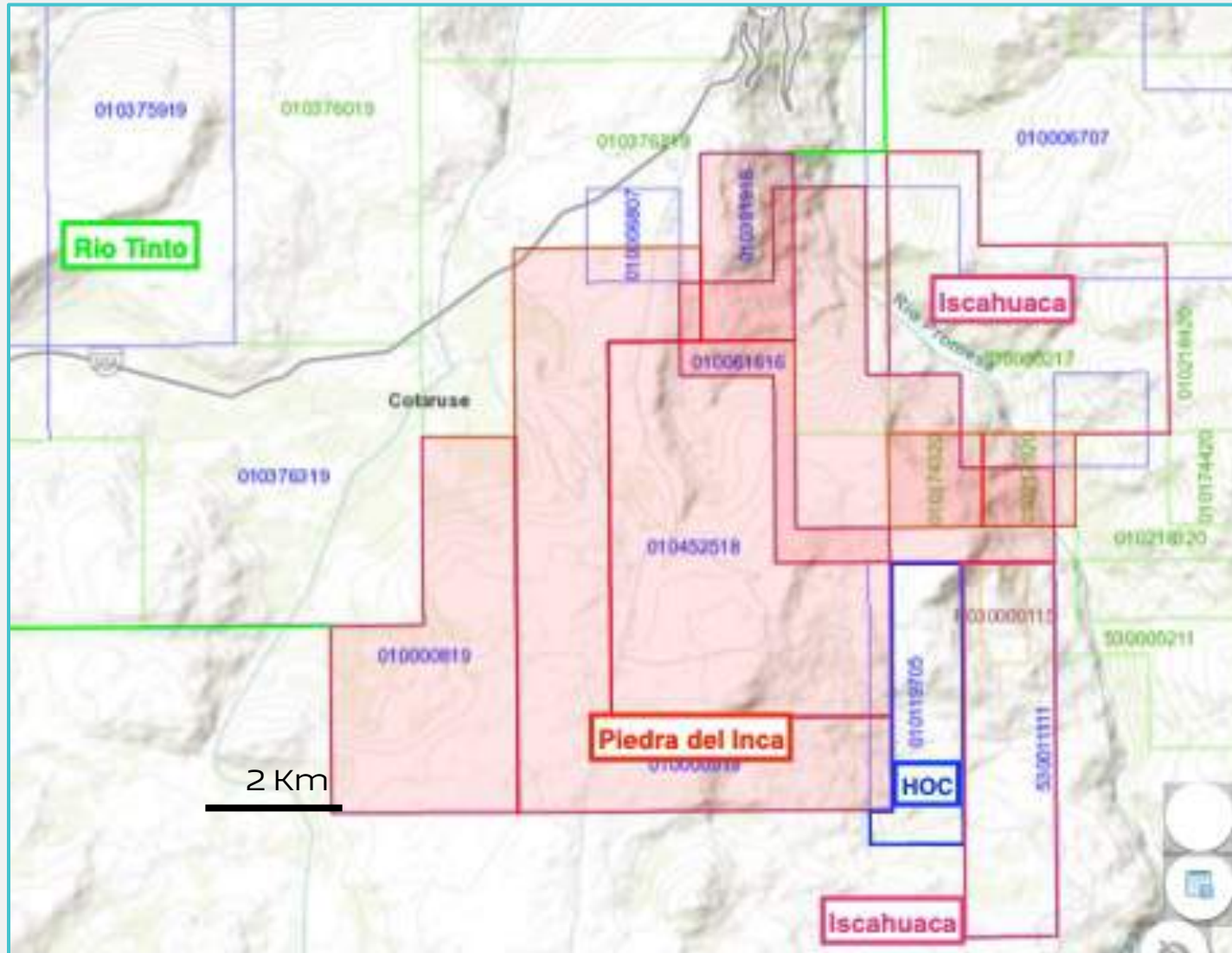


ANTASONCCO PROJECT, PERU

- Andahuaylas Copper – Gold Belt home to multiple Tier One Cu-Au porphyry-skarn deposits:
 - Las Bambas: 1.2 Bt @ 0.62% Cu
 - Cotabambas: 534 Mt @ 0.30% Cu
 - Constancia-Katanga: 534 MT @ 0.31% Cu
 - Haquira: 569 Mt @ 0.56% Cu
- Region is also home to high-value exploration projects, e.g. C3 Metals Jasperoide Project, a project identified and brought into the Junior Mining space by the CRG team.



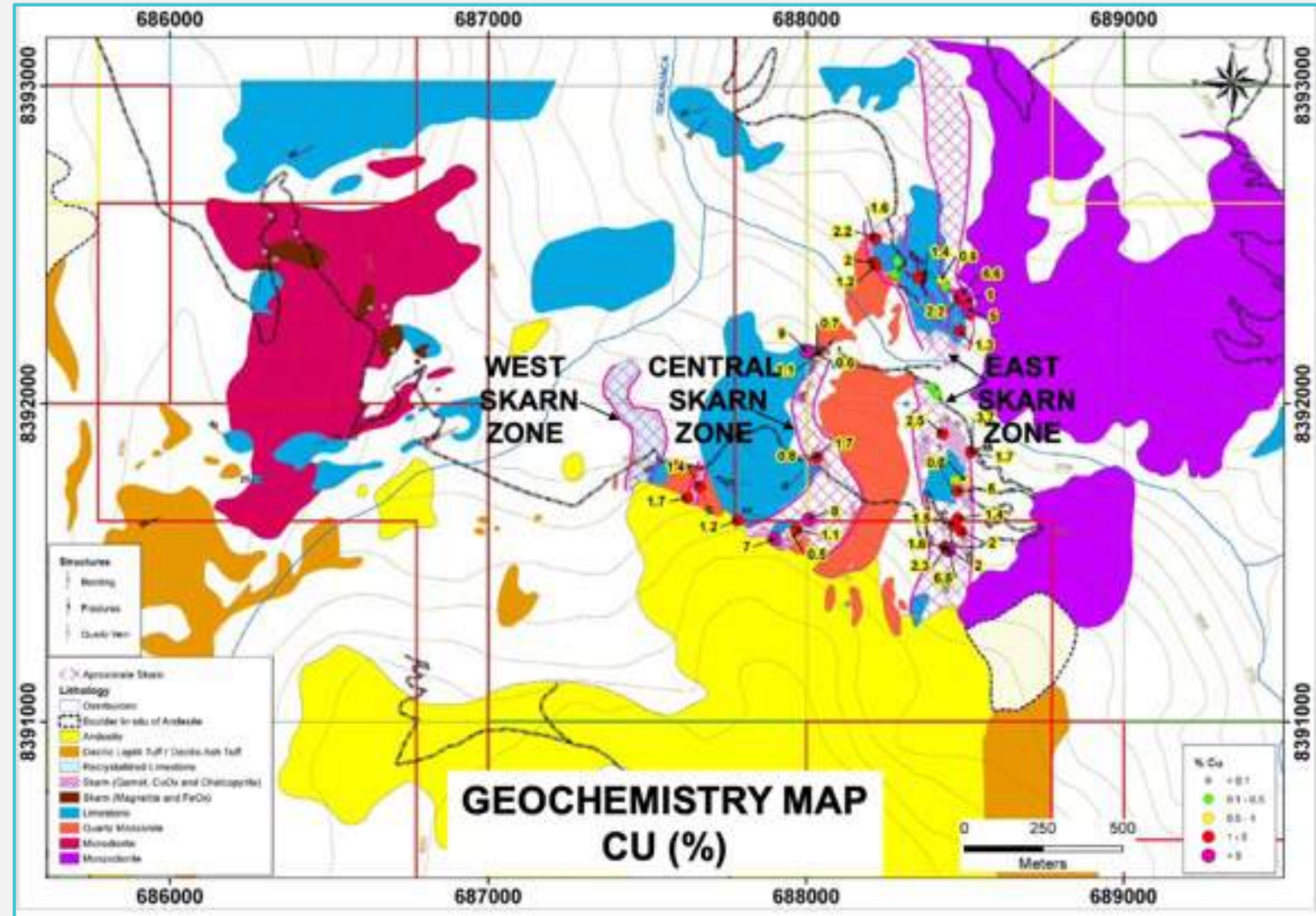
ANTASONCCO PROJECT PERU



- Land package: Approximately 5000 ha (50 sq km) in eight concessions.
- Term sheet signed with Piedra del Inca S.A.C., back-loaded option with total buyout of \$9.2M. No significant payments until drilling permits are granted.
- Piedra del Inca is partnered with local community (Iscahuaca) who will receive 40% of option price. Community involvement at a project level will greatly facilitate permitting.
- Rio Tinto and Hochschild are active in the area.

ANTASONCCO GEOLOGY AND GEOCHEMISTRY

- High grade copper mineralization is hosted by three parallel skarn horizons hosted by the Ferrobamba Formation limestone, host to the billion pound copper deposits in the Andahuaylas Cu – Au belt.
- Porphyry dikes in the East Skarn Zone contain up to 430 ppm Mo and may represent the geochemical signature of a deeper porphyry system.
- The skarn horizons strike southerly under post-mineral volcanic rocks with expansive blue-sky potential.
- Extensive sampling, geologic mapping, and IP surveys has Antasoncco ready to drill.

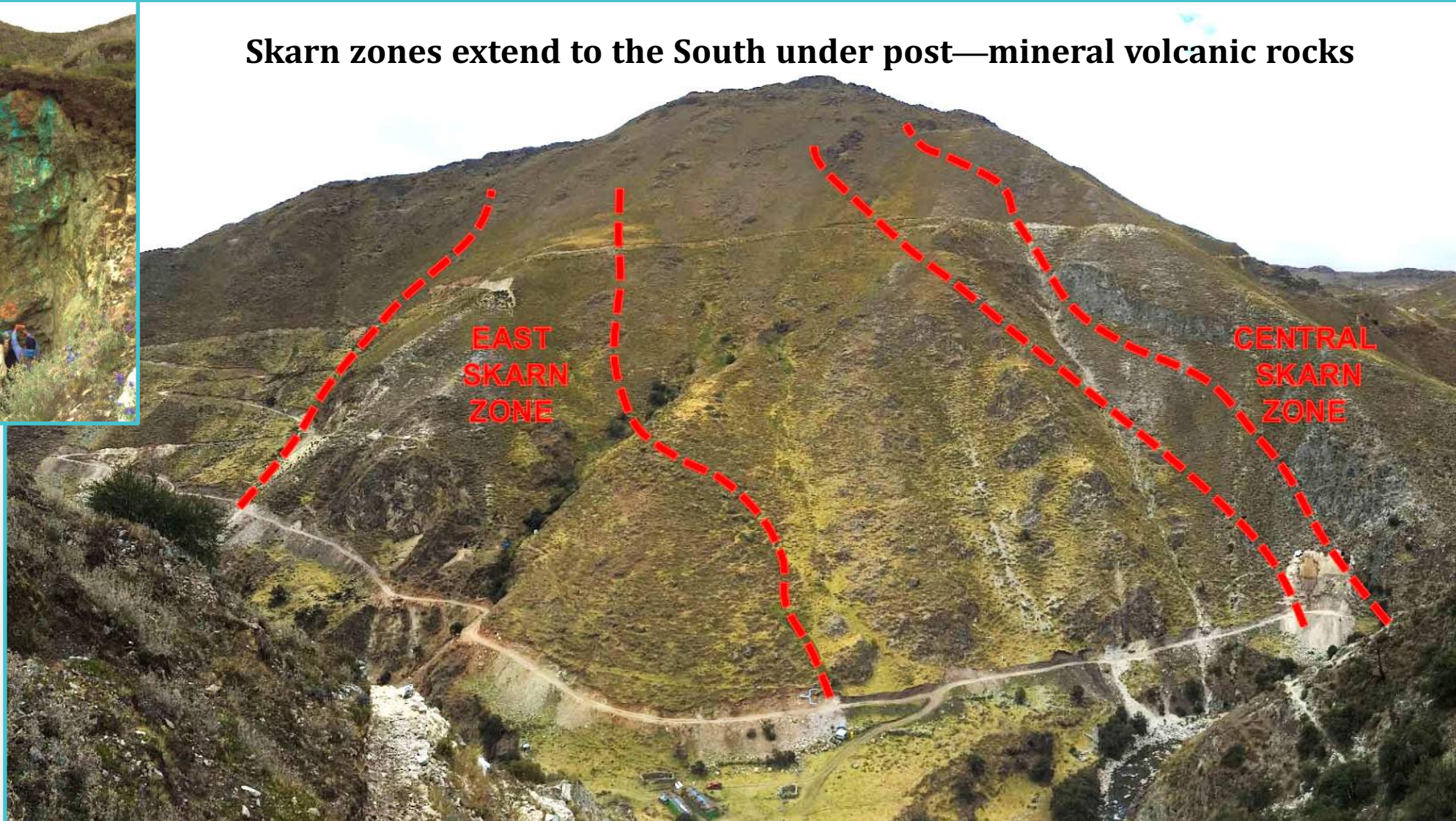


ANTASONCCO SURFACE OUTCROPS

Skarn zones extend to the South under post—mineral volcanic rocks



- High grade copper mineralization, ranging from 0.5 to 8.0% Cu in rock chip samples, is hosted by three parallel skarn horizons with a strike length of >2000 metres!!



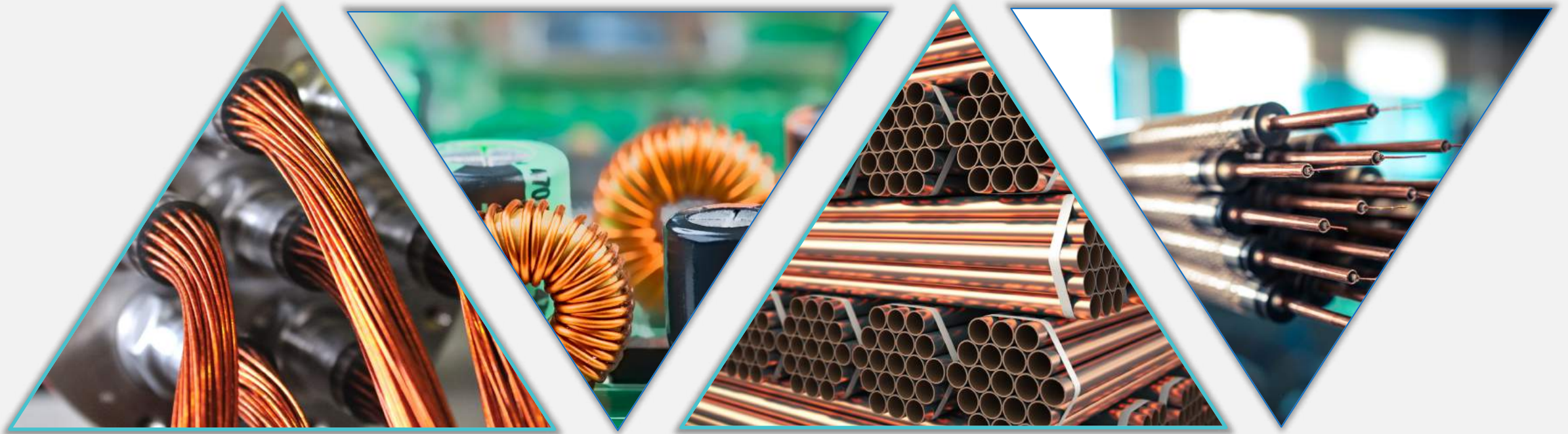
SHARE STRUCTURE



PROFORMA CAPITALIZATION TABLE		
Shares Issued & Outstanding		29.7M
Market Capitalization	(C\$M)	\$3.0M
Options		5.7M
Restricted Shares		20.0M
Cash	(C\$M)	\$0.6M
Debt	(C\$M)	\$0

Low initial valuation locks in huge upside for seed-round investors.

COPPER RESOURCE GROUP



CORPORATE OFFICE
8587 White Fir Street, Unit A1
Reno, NV 89523
Telephone: 1.530.414.4400